

Logging in to the Trading Area

Outlined below are the four easy steps to gain access to our secure trading area and the TraderEx simulation.

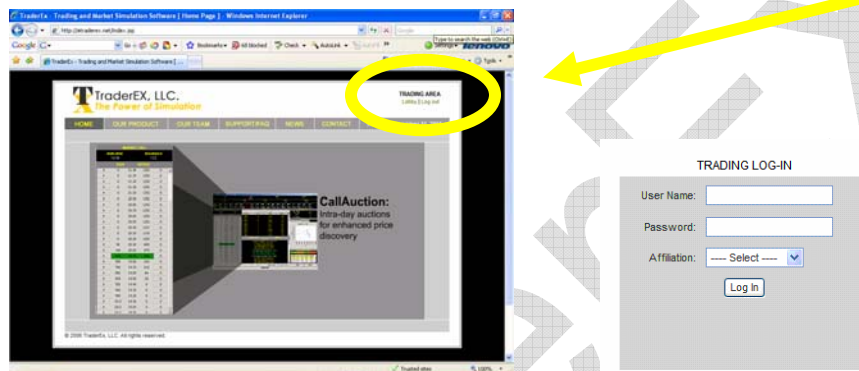
First you log into the system, join a preconfigured simulation from our “lobby”. Run the simulation with a few quick mouse clicks. You’ll be trading in no time.

Page 3 is a quick troubleshooting guide.

1) Go to:

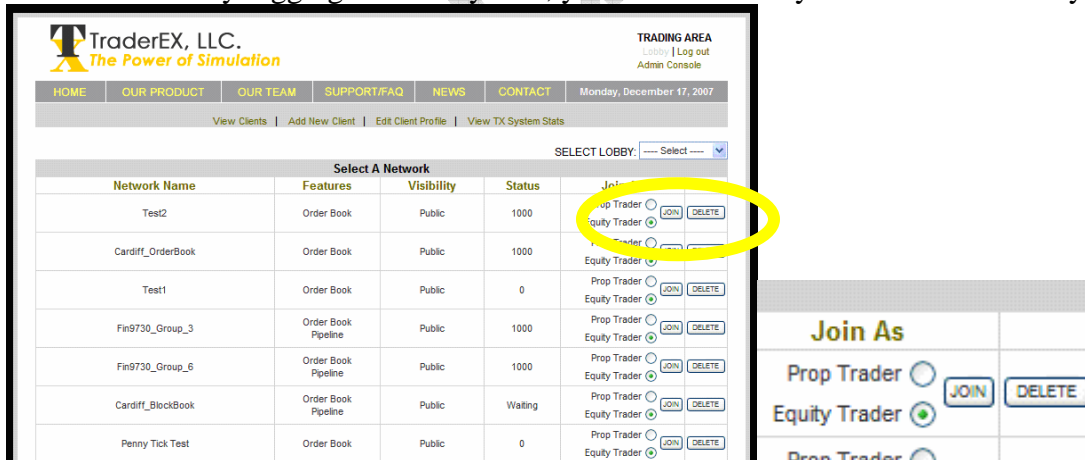
www.eTraderEx.net

In the top right hand corner, log into the Trading Area by clicking “Member Log In”.



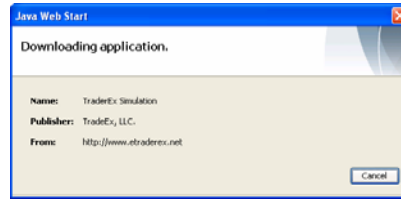
2) Login using the supplied username and password. You may ignore affiliation for now.

After successfully logging into the system, you will be directly to the network lobby.

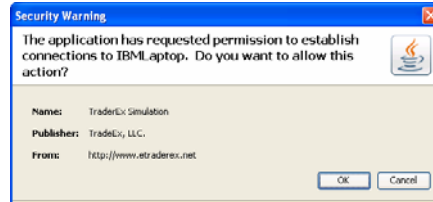


3) Once in the lobby, click JOIN next to the network named “ConnectionTest”. You’ll join this simulation as an equity trader role as well as the network administrator.

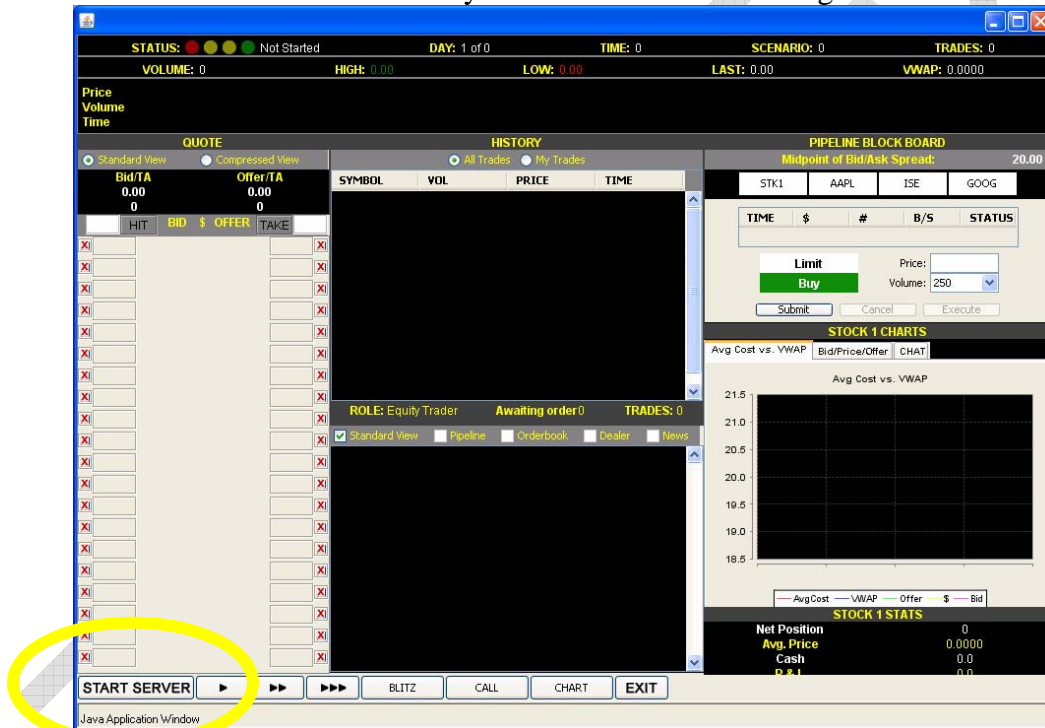
The following screens with appear.



Be sure to click OK to allow communications from this machine to our servers.



Then the simulation should load and you should see the following:



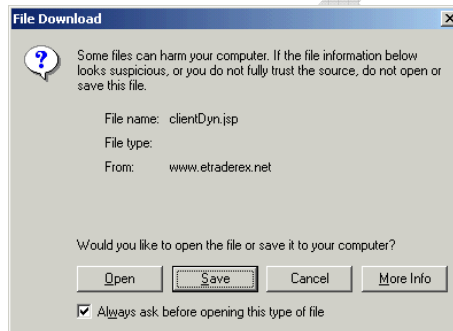
4) Step four consists on initializing the network (4a) and starting the simulation (4b).
4a) Click on “START SERVER” and wait until the time reads “WAITING”. It will say “Initializing” first, then it will go to a waiting state.

4b) Click “>>>>” once the time is “WAITING”. This will start the flow of orders coming into the system.

If these four steps were successful you are ready to run TraderEx. If the time never changes to “Initializing” and subsequently to “Waiting”, a special communication port will have to be opened. See the Troubleshooting guide for more information.

Troubleshooting Guide:

- Step Problem Detail and Solution(s)
- 1 Don't have an internet connection
 Our site is down, in with case you'll be notified
 - 2 Login is not valid. Check with your license administrator for expiry dates. . It may have expired or been mistyped. Try again.
 - 3 You don't have the required JAVA software to run the simulation. Go to <http://java.sun.com/javase/downloads/index.jsp>. Click to download JDK 6 Update 5. Follow the onscreen instructions to install.



If you see this image, first, deselect the checkbox on bottom titled “Always ask before opening this type of file”. Click “Open” and select Java Web Start as the starting application from the list of choices.

- 4 Communication Port 1099 is closed to internet traffic. This sometimes occurs from within a private domain, like a computer lab at a university. Notify the network administrator of this problem and they can resolve it. They will need the URL of TraderEx and our IP address. www.eTraderEx.net (69.89.6.37).